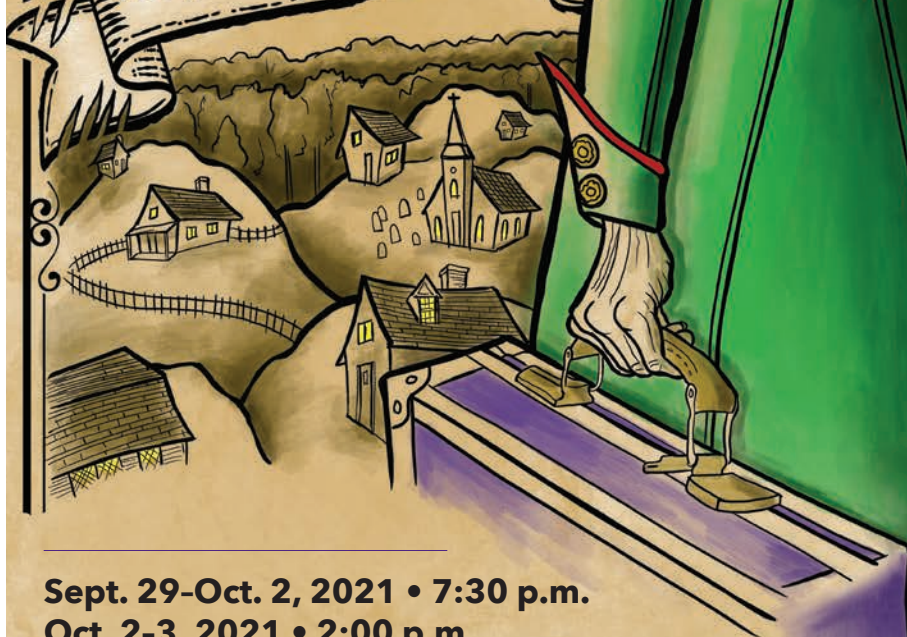


ECU LOESSIN
PLAYHOUSE

THE VISIT

By Friedrich Durrenmatt
Adapted by Maurice Valency



Sept. 29-Oct. 2, 2021 • 7:30 p.m.

Oct. 2-3, 2021 • 2:00 p.m.

McGinnis Theatre

Tickets:

\$15 | \$12 seniors/ECU faculty/staff | \$10 ECU students

252-328-6829 and theatredance.ecu.edu

ADA Accommodation:

252-737-1018 • ada-coordinator@ecu.edu

C.S. 21-1398



Guest Director

Kimille Howard



Kimille Howard is a New York-based director, deviser, writer and filmmaker. She is an Assistant Stage Director at the Metropolitan Opera and recently worked on the new James Robinson production of *Porgy and Bess*. She is the newly appointed Artistic Director of the Lucille Lortel Theatre's NYC Public High School Playwriting Fellowship and a cofounder of the Black Classical Music Archive.

Select directing credits: *The Passion of Mary Cardwell Dawson* (Glimmerglass Festival), *L'Amant Anonyme* (Wolf Trap Opera), *Death By Life: a virtual opera* (White Snake Projects), *In The Open by Mona Monsour* (Western Connecticut State University), *Soil Beneath* by Chesney Snow (Primary Stages/59E59), *\$#!thole Country Clapback* by Pascale Armand (Loading Dock Theatre), *The Fellowship Plays* (Lucille Lortel Theatre Foundation), *A Light Staggering* by Jeesun Choi (Ensemble Studio Theatre), *Tidwell: or the Plantation Play* by Rodney Witherspoon II (Samuel French OOB Short Play Festival - winner), *Low Power* by Jon Kern (EST), *BLACK GIRLS ARE FROM OUTER SPACE* by Emana Rachelle (National Black Theatre), *Skeleton Crew* by Dominique Morisseau (TheatreSquared) and *TRIGGERED* by Gabriel Jason Dean (Cherry Lane Theatre).

Kimille was awarded Best Director at the 2016 Thespis Festival for *It's All About Lorrie* by Joseph Krawczyk (Hudson Theater) which received a commercial run at The American Theater of Actors in 2017. Her work has also been seen at MultiStages, The Circle in the Square Theatre Circle Series, The Queens Theatre, Juilliard, The Flea, The Lark, JAGFest, NYU, Sea Dog Theater, and Atlantic Acting School, CLASSIX/The Lewis Center, among others. Broadway: *Ain't Too Proud* (Assistant Director).

UPCOMING: Met Opera: *Porgy And Bess* (Assistant Stage Director) Recent Fellowships: NYTW 2050 Fellowship, MTC Jonathan Alper Directing Fellowship, current member of The New Georges Directors Jam, and a participant in New York Stage and Film's inaugural NYSAF NEXUS project. www.kimillehoward.com

ECU® / LOESSIN PLAYHOUSE

Jayne Klinger Host, Producing Artistic Director



Directed by **Kimille Howard**

Costume Designer
Delta Childers-Smith

Scenic Designer
Nolan O'Dell

Lighting Designer
Michael Shoaf

Sound Designer
Michael Shoaf

Composer
Jacob Kerzner

Movement Designer
Jill Matarelli Carlson

Technical Director
Reid Parker

Stage Manager
Dashay Williams

"The Visit" is presented by arrangement with Concord Theatricals on behalf of Samuel French, Inc.
www.concordtheatricals.com.

THE VIDEOTAPING OR MAKING OF ELECTRONIC OR OTHER AUDIO AND/OR VISUAL RECORDINGS OF THIS PRODUCTION AND DISTRIBUTING RECORDINGS OR STREAMS IN ANY MEDIUM, INCLUDING THE INTERNET, IS STRICTLY PROHIBITED, A VIOLATION OF THE AUTHOR(S)'S RIGHTS AND ACTIONABLE UNDER UNITED STATES COPYRIGHT LAW. FOR MORE INFORMATION, PLEASE VISIT: <https://concordtheatricals.com/resources/protecting-artists>

Setting

Place: The town of Gullen, in the Germanic region of Europe

Act 1: Out-of-date

Act 2: The plot thickens

- 15-minute intermission -

Act 3: A dramatic conclusion

Cast

Claire Zachanassian	Tatiana Burrus
Bobby	Bobby Moreno
Pedro	Camden Hare
Max	Joshua Seabrook
Mike	David Marshall
Kobby	Nikki Neuberger
Lobby	Riley Yates
Anton Schill	Andrew Goins
Frau Schill	Jacqueline Nunweiler
Karl	Zion Zollicoffer
Ottile	Jessica Balton
The Burgomaster	Aaron Ford
The Pastor	Bradley Peacock
Professor Müller	Casey Wortham
Doctor Nüsslin	Rebekah Marler
The Policeman	William Sutton
The Painter	Julia DeSena
Hofbauer	LaShaun B. Winslow
Vogel	Tom Gregus
Wechsler	Torren Melton
Helmsberger	Naz Harvey
The First Woman	Tenayjah X. Hawkins
The Second Woman	Hannah Grace Gereb
The Frau Burgomaster	Emma Herlong
Hermine	Samantha Scipioni
Adolphine	Haven Bowers
The Conductor	John Little
The Reporter	Kyleigh McCormack
The Cameraman	Grayce Anne Mosier
The Truck Driver/Athlete 1	Keagan Kermode
Athlete 2	Nina Cecilia
Athlete 3	Julianne Woodward
The Station Master	Dane Faulkner
The Radio Reporter/Panther	Emily Phoebus

Production Staff

Intimacy Director	Jill Matarelli Carlson
Music Supervisor	Jacob Kerzner
Vocal Coach	Elana Kepner
Movement Coordinator	Emily Phoebeus
Dramaturg	Reagan Blackburn
Assistant Director	Tenajah X. Hawkins

Production Manager	Courtney Rasor
Lead Assistant Stage Manager	Victoria Harden
Assistant Stage Managers	Katelyn Chavis, Cjay Miller
Light Board Operator	Ben Lannak
Q-Lab Operator	Andrew Gazso
Running Crew	Isaiah Bussey, Molly Howden, Hopelyn Kovacs, Meghan Sielaty, Matthew Ward
Wardrobe Crew Chief	Noah Joyner
Wardrobe Crew	Sara DeMolli, Abbie Haynes, Matthew Perry, Thomas Price

Costume Shop Supervisor	Genevieve McCormick
Cutters/Dyers/Drapers	Delta Childers-Smith, Noah Joyner, Maddie Lind, Genevieve McCormick, Thomas Price

Shop Foreman	Chad Rasor
Scene Shop Assistants	Jake Bell, Frankie Martinez
Property Master	Jeni L. Parker
Assistant Property Master	Alex Webb
Property Artisan	Tori Harden
Paint Charge	Nolan O'Dell

SoTD Assistant Director	Jeni L. Parker
Administrative Assistant	Amanda Hudson
Coordinator of Operations & Outreach	Stephanie Slusser
House Manager	Chloe Ament
Box Office Staff	Myaa Coley, Ellie Ergenzinger, Nevaeh Harris

Production Staff

THEA 2011 SCENERY/LIGHTING CREW

Jonathan Baard, Zackary Barnes, Hadley Barrett, Sophia Bennett, Nasir Braswell, Travon Chambers, Eva-Rose Cole, Taylor Debnam, Matthew Drake, Joseph Dufour, Geneva Forehand, Andrew Gazzo, James Giles, Seth Goins, Jasmine Gould, Brielle Herlein, Jaela John, Avery Johnson, Endya Joyner, Hopelyn Kovacs, Madison Krizmanich, Ben Lannak, Vicki Maas, Sierra Morse, Griffin O'Brien, Paige O'Neil, James Parker, Joseph Perkins, Jackson Phillips, Lena Phillips, Emily Shingleton, DeAsura Sidberry, Cayson Sipprell, Kathleen Smith, Olivia Stegall, Rachel Urato, Jackson Warren, Alexa Weir, John Wells

THEA 2011 COSTUMES/PAINT/PROPERTIES CREW

Prisca Arendash, Jaleel Battles, Morgan Bearup, Sawyer Bowers, Giovanni Cash, Kayla DeLise, Avery Filliben, Michael Gehlhausen, Kaitlyn Gerow, Thomas Halik, Rykkeal Harrison, Jaliyah Jamison, Lindsay Jenkins, Michael Jones, Jonathan Koppelman, Emma Laughinghouse, Nina Maliszewski, David Marshall, Emilio Marty, Riley McGowan, Tracy McWilliams, Emma Muncie, Kelsey Paluch, Joeanna Pelletiere, Kayla Perry, Mallory Ramsay, Joshua Saffold, Morgan Shwonik, Skylar Smith, Katherine Snow, Cristina Stevens, Logan Stroud, Lydia Taylor, Victoria Taylor, William Wakeford

Production Spotlight



Alex Webb is a senior design and production major from Chapel Hill, NC. You may have seen their work as assistant prop master in the ECU/ Loessin Playhouse productions of *Ghost the Musical*, *Into The Woods*, and *If/Then*. Their other work at ECU includes scenic art and props for *The Three Musketeers*, *The Mystery of Edwin Drood*, and more.

Dashay Williams is a senior stage management major from Sharpsburg, NC. She has worked on 10 different shows here at ECU and has participated in various backstage roles during her educational journey. After graduation, Dashay plans to work her way up in the industry and become a casting director for film.



About the Cast



Jessica Balton (*Ottile*) is a sophomore from South Florida pursuing a BFA in theatre arts with a concentration in musical theatre and professional acting. Jessica was previously seen in ECU/Loessin Playhouses production of *Songs For A New World* as a primary singer. After graduation, Jessica hopes to continue to perform, whether that be onstage or onscreen.



Haven Bowers (*Adolphine*) is a sophomore double major studying Musical Theatre and Theatre Education in ECU's Honors College. She is beyond thrilled that *The Visit* will be her first mainstage production with ECU/Loessin Playhouse. She has previously been featured in *Doctor Dolittle* with ECU's Storybook Theatre.



Tatiana Burrus (*Claire Zachanassian*) is a junior double major in professional acting and theatre education from Durham, NC. She appeared in *Gooney Bird Greene* as Felicia Ann/Cow and as Belphragia in *Lysistrata*. Tatiana plans include pursuing her acting career by possibly getting her masters degree in acting and then plans to pursue a career in teaching theatre!



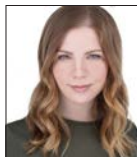
Julia DeSena (*The Painter*) is a senior professional acting major from Long Island, New York. This is Julia's second mainstage show at ECU. Julia appeared as an Old Woman in *Lysistrata*.



Dane Faulkner (*The Station Master/Delivery Man*) is a sophomore professional acting major from Moyock, NC. You may have seen Dane in previous productions as Barnaby in *Hello Dolly*, Gilbert Blythe in *Anne of Green Gables*, and some Storybook Theatre productions. Dane plans to work as an actor after finishing his degree.



Aaron Ford (*The Burgomaster*) is a junior at ECU and is working on a double concentration in the musical theatre and professional acting programs. Aaron grew up in Elizabeth City, NC and attended COA before transferring here. *The Visit* is Aaron's fourth appearance on the ECU main stage and he is more excited than ever to help bring this story to life.



Hannah Grace Gereb (*The Second Woman*) is a senior musical theatre and professional acting major from Powell, OH. Hannah Grace was previously cast in *Yo, Vikings!* as Emma Katz, *The Radio Plays* as an understudy, and *Fisherwoman* in *Lysistrata*. Prior to her arrival at ECU, Hannah Grace was active with Stagelights Theatre Company.



Andrew Goins (*Anton Schill*) is a sophomore musical theatre and professional acting student from Currituck County, North Carolina. This is his first mainstage show with ECU. Andrew previously appeared in *A Woman Called Truth* and *Doctor Dolittle* for ECU's Storybook Theatre. Andrew is excited for everyone to see the show, and welcomes everyone back to live theatre!



Tom Gregus (*Vogel*) is a second year transfer student majoring in professional acting from Apex, NC. While this is Tom's first season in the ECU/Loessin Playhouse, he is very excited for the future years he will spend on stage here. After graduation, Tom plans on moving up north to work in New York as an actor on Broadway.

About the Cast



Nina Cecilia (*Athlete 2*) is a junior musical theatre major from Fredericksburg, Virginia. She is thrilled to be performing in ECU's main stage productions for the first time! She has previously performed with Riverside Center for the Performing Arts as Cinderella in *Cinderella's Glass Slipper* and Princess Acrimonia in *Croaker*. Enjoy the show!



Camden Hare (*Pedro*) is a junior musical theatre major, originating from Sunbury, PA. You may have seen Camden in previous ECU/Loessin Playhouse productions in the Ensemble of *Ghost the Musical*, or heard Camden in the One Act Radio Plays as both Henry Peters in *Trifles* and Robert in *Blind Date*. Post-graduation, Camden hopes to act/travel around the country.



Naz Harvey (*Helmsberger*) is a senior pursuing a BFA in Theatre Arts with concentrations in musical theatre and professional acting. This is his fifth mainstage show here at East Carolina. Post-graduation, he hopes to travel and work with a cruise line. He is extremely blessed to have his friends and family in his corner.



Tenayjah Hawkins (*The First Woman*) is a senior musical theatre major from Greensboro, NC. Tenayjah previously appeared in ECU/Loessin Playhouse productions such as *If/Then*, *Ghost The Musical*, *The Jury*, and several Storybook Theatre Productions. Tenayjah even served as Assistant Director for *Songs For A New World*. Post-graduation, she plans to start her career in Atlanta!



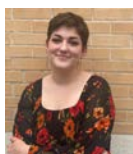
Emma Herlong (*The Frau Burgomaster*) is a senior Professional Acting major from Kinston, NC. You may have heard Emma in the ECU/Loessin Playhouse Radio Dramas as Nancy in *Blind date* and Mrs. Carter in *Florence*. Other credits while attending ECU include Storybook Theatre's production of *Romona and Beezus* and 5th Street Players' production of *Island Song*.



Keagan Kermode (*The Truck Driver/Athlete 1*) is a senior musical theatre and professional acting major from Roswell, NM. You may have seen Keagan on the Loessin Playhouse stage as Sam Wheat in *Ghost* and as Rapunzel's Prince in *Into The Woods*. After graduation, Keagan plans to work as an actor along the east coast.



John Little (*The Conductor*) is a senior theatre for youth student in the School of Theatre and Dance of East Carolina University. He is very happy and excited to be involved in this show and hopes you enjoy it.



Rebekah Marler (*Doctor Nüsslin*) is a junior musical theatre and professional acting double major from Currituck, NC. Rebekah has previously appeared as Izze in *The Jury*, Cinderella's Mother/Granny/Giant in *Into the Woods*, and Old Woman I in *Lysistrata* with ECU/Loessin Playhouse. After graduation, Rebekah hopes to perform live theatre on the professional level.



David Marshall (*Mike*) is a sophomore professional acting major from Raleigh, North Carolina. David's most memorable roles in the past have been Arthur Roeder in *Radium Girls*, Jason in *Medea*, Bothvar in *Yo Vikings*, and Joshua Bradley in *Bright Ideas*. After graduation, David plans to move to New York to pursue acting.

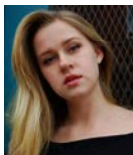
About the Cast



Torren Melton (*Wechsler*) is a senior professional acting major from Greensboro, NC. You may have seen Torren in last semester's production of *Lysistrata*, as well as listened to him in the ECU/Loessin Playhouse Radio Plays *Poof!* and *Florence*. After graduation, Torren plans to pursue an acting career out of the state.



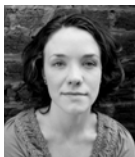
Bobby Moreno (*Bobby*) is a junior Professional Acting major with a minor in Political Science. He has most recently appeared in *Lysistrata*, the ECU Radio Plays, and *Henry & Ramona*. He is incredibly excited and honored to be part of this production and wishes all the graduating seniors good luck.



Grayce Anne Mosier (*The Cameraman*) is a senior professional acting major with a Russian and film minor. She is so excited to be in her second mainstage production! Grayce previously appeared in the ECU/Loessin Playhouse production of *Lysistrata* and 5th Street Players' *Island Song*. After graduation, Grayce plans to become a film director.



Nikki Neuberger (*First Blind Man*) is a senior majoring in musical theatre and training in the Meisner technique. She has appeared in ECU/Loessin Playhouse productions such as *Into the Woods* as Lucinda and *The Wolves* as #8. Even though she is from Baltimore, Maryland, she aspires to work as an actor, singer, and dancer in New York City.



Jacqueline Nunweiler (*Frau Schill*) is a professional acting major with a minor in design and production. She was born in Indiana but has lived in the south for most of her life. She got her AFA in Fayetteville where she was seen in productions with FTCC and Sweet Tea Shakespeare. Her plan is to continue acting for a long time.



Bradley Peacock (*The Pastor*) is a senior majoring in theatre arts and communications, with a concentration in professional acting. He is from Suffolk, Virginia and has appeared in previous ECU/Loessin Playhouse productions such as *Trifles* and *Lysistrata*, and Storybook Theatre's production of *Henry and Ramona*.



Emily Phoebeus (*Panther*) is a senior musical theatre major. She has previously been cast in *Ghost the Musical* and *Songs For A New World* here at ECU/Loessin Playhouse. She is very excited to have the opportunity to choreograph and perform in *The Visit*. After graduation, Emily hopes to perform and eventually become a casting director or a theatre teacher.



Samantha Scipioni (*Hermine*) is a senior pursuing a double BFA in Theatre Arts with a concentration in musical theatre and theatre education. Some productions at ECU she has previously performed in include the Subway Ghost in *Ghost the Musical* and Tess in *The Jury*. Her goals after graduation are to work with a variety of professional companies and eventually teach theatre.



Joshua Seabrook (*Max*) is a sophomore professional acting major from Charlotte, NC. After College, Joshua plans to move to Los Angeles or New York to start work as a professional actor.

About the Cast



William Sutton (*The Policeman*) is a senior musical theatre and professional acting major from La Grange, NC. He is best known on the ECU/Loessin Playhouse stage for his tree impersonations in *Into the Woods* and as a Spartan in *Lysistrata*. After graduation, William plans to move to Atlanta, GA, to break into the film industry.



Lashaun B. Winslow (*Hofbauer*) is a junior BFA musical theatre and professional acting major at East Carolina University. You may have seen him in previous ECU/Loessin Playhouse productions *The Narrator/Mysterious Man* in *Into the Woods*, the magistrate in *Lysistrata*, and a primary singer in *Songs for a New World*. Most recently he's performed with Berkshire Theatre Group.



Julianne Woodward (*Athlete 3*) is excited to be a part of her second mainstage production at ECU! Born and raised in Chapel Hill, she is working to earn her BFA in theatre arts with a concentration in musical theatre and professional acting. Notable credits include *Ghost* and *Cinderella*. After graduating, Julianne plans to begin her career as a Disney performer.



Casey Wortham (*Professor Müller*) is a sophomore musical theatre major from Garner, North Carolina. Casey's previous Storybook Theatre productions include *Doctor Dolittle*, directed by Patch Clark. After graduation, Casey hopes to work professionally as a performer, as well as complete grad school as she is a future dance/interior design double minor.



Riley Yates (*Second Blind Man*) is a junior theatre education and musical theatre double major. Previously Riley has been in ECU Storybook Theatre's productions of *Henry and Ramona* as Lisa and *Doctor Dolittle* as the assistant director and Sparrow. After graduation Riley plans on using her two degrees to teach, direct and eventually get a PhD.



Zion Zollicoffer (*Karl*) is a sophomore musical theatre major from Charlotte, NC. You may have see Zion in previous ECU/Loessin Playhouse productions as a Dancer in *Songs For a New World* and Lion in *Doctor Dolittle*. After graduation Zion plans to become a working actor based in New York city and/or Los Angeles.

Join the Friends of Theatre and Dance

Be a part of the magic!

Mission

The primary mission of the Friends of Theatre and Dance is to raise money for merit scholar-ships to recruit and retain gifted and talented students at the ECU School of Theatre and Dance. To date, the Friends have awarded more than \$100,000 in scholarships.

Involvement

Friends members serve as an important support and advisory group for the school and the ECU/Loessin Playhouse. They promote projects that increase the community participation and support of Playhouse productions. They also help to create a welcoming environment for visit-ing guest artists.

As a member, you also have the option of serving on the Board of Directors. Board members serve on various committees such as membership, hospitality, the annual gala, and others. Some committees are year-round while others are active seasonally.

Benefits

Members enjoy many benefits, including invitations to receptions, priority seating, advance notice of added performances, and other events and formal recognition in playbills. Membership is usually tax-deductible, and often is matched by corporate programs.

Annual Membership Levels

Member	\$50
Patron	\$100
Benefactor	\$250
Leader	\$500
Director	\$1,000

Memberships are from June 1 to May 31 and are renewed annually.

Leader and Director members receive reserved parking when attending the performances. Director members are given additional benefits at the University level.

Call 252-328-6829 to join today!

Or mail a check, payable to ECU Friends of Theatre and Dance
ECU Mail Stop 553
Greenville, NC 27858-4353

School of Theatre & Dance

Scholarships & Funds

Thomas and Karen Bartik Endowed Scholarship Archie
R. Burnette Family
Endowment for Theatre Arts
Howell Binkley Student Lighting Award
Nell Draper Burnette Acting Scholarship
Johnnie Collins III Drama Endowment
Peggy and William Corbitt Scholarship Fund
Friends of Theatre and Dance Scholarship
Hardy Scholarship Fund in Theatre Arts
Lynette Dorn and George H. Johnson, Jr. Scholarship
Lynn and Pat Lane Performing Arts Scholarship
Lasting Impressions Scholarship Endowment
Edgar and Amanda Loessin
Acting/Directing Scholarship
John and Ann Laliotes Endowment in Dance
John and Ann Laliotes Endowment in Theatre

Nancy and George Meiggs Memorial Fund
George R. Merrell Scholarship Fund
John D. Messick Scholarship
Graham Pollack Endowment Fund
Mavis Ray Dance Scholarship
Ellis Roberson Scholarship Endowment
School of Theatre and Dance Priority Fund
School of Theatre and Dance Scholarship Pool
John Shearin Memorial Scholarship Fund
Archie R. and Rendie Ward Smith Scholarship
Olin and Angela Vincent Memorial
Scholarship Endowment Fund
Visual and Performing Arts Endowment - Theatre Fund
Marie Smith Wallace Dance Scholarship Fund

Scholarship & Fund Donors

Chancellor's Society

Emily Procter and Paul Bryan
Kathleen Chaffee

Bryant Chestnut
William and Sandra Leach

Recent Donors

Kendra and Mark Alexander
Alice Arnold
Tom & Karen Bartik
Amanda Benedict
Robert Bradford
Angela and Robert Brown
Stephen Burleigh
Katie and Alex Chaffee
Jillian Clark
Michael Corbitt
Christine Danell-Tepper
Susie Eichman

Charles and Cynthia Fox
Beth Grant
Kristin and J.D. Hamilton
Angela and Bobby Hilemon
Jay and Amanda Hudson
Bruce Jarvis
Sarah Kleinke
Ann Laliotes
Peter Larson
Deborah O'Berry
Maureen O'Leary
Thomas and Jayne Peeler

Rob & Clarine Powell
Mark David Ransom
Daniel Shearin
Jennifer Shearin
Mary Shore
Kimberly Simpson
Joyce Storey
Karen and David Tisdale
Teresa Vaughn
Christine Vlahakis
Jeremy Woodard

Friends of Theatre and Dance

BOARD OF DIRECTORS

Tamara Shusterman, President
Cyndy Latham Wilson, Past President
Erin Scully, President Elect
Hannah B. Goswick, Secretary

Michael Brown
Saptosa Foster
Jill A. Holcroft Williams
Carol Kulikowski

Renee Herlong
Margie Green Wright
Jayme Klinger Host, Director
Michael Crane, Advisor

Friends of Theatre and Dance

Members 2020-2022

Director (\$1,000 and above)

Dr. Chris and Mary Buddo
D. Lynn Morris, M.D. and
B. Christine Clark, Ph.D.
Ronald Ellis
Telecia Evans

Thomas & Christine Feldbush
William and Sandy Hardison
Sandra Leach
Emily Procter

Mrs. Betty Brown Ridan
Richard and Jennifer Stone
The Eddie and Jo Allison Smith
Family Foundation

Leaders (\$500-\$999)

Judy and Carson Bays
Drs. William E. and Diane Castle
Randy and Mary Ellen Cole
Neil Dorsey LTCs Surry and
Dorothy Everett

Wayne and Sherry Holloman
Frances Mallison
Dr. Charles Marson
Patricia Maxwell
Dr. Dan and Sarah Mayof

William and Susan Meggs
The Mid-Atlantic Foundation
Skip and Edith Rand
Gerald and Brenda Roberson
David and Emily Weil

Benefactors (\$250-\$499)

Tom and Karen Bartik
Brenda Campbell
Mary Cotter
Curtis and Deborah Edwards
Charlotte and Robert Edwards

Gregory and Carin Lapicki
Joanne Kollar
Carol and Tom Kulikowski
Lewis Patrick Lane, III
Dr. Gregory and Carin Lapicki

Dr. Richard and Lynne Marks
Robert and Clarine Powell
Doug and Tamara Shusterman
Harvey S. Wooten

Patrons (\$100-\$249)

Andrew and Melinda Arnold
Louise C. Hamilton
Ann Laliotes
Lynda Lane
Alan Bailey
Mary and Chuck Beatty
Sara Bentzel
Bill and Ann Brewer
Mrs. Barbara Chapman-Nellis
Terri and Warren Cobb
Ryan and Jennifer Cole
Michael Corbitt
Mary Cotter
Larry Cox
Dr. E.G. and Kay Crawford
Christine Danell-Tepper

Ray and Mary Dennis
Richard Didio
Russell and Patsy Duke
Charles and Cheryl Duncan
Dr. John Fletcher
Louis J. Folen, Jr.
Stephen A. Graves
Louise C. Hamilton
Jill Holcroft-Williams
Lennon and Sharon Hooper
Mitchell and Deborah Jones
Claude and Victoria Kennedy
Ann Laliotes
Lynda Lane
Brian Maliszewski
Kathy and Juan March

Carroll and Glenda McLawhorn
John Mueller
Janet Neckyfarow
Laura and Thomas Nelson
Carol and Stephen Persche
Danny and Johnnee Rice
Drs. Alexander Robertson
and Etsil Mason
Drs. Rita and Karl Rodabaugh
Deborah and Perry Rogers
William and Mary Louise Sholl
Ronnie and Jo Lynn Smith
Dr. and Mrs. Robert Tacker
Melvin Toler
Ms. Jane Waller
Buddy Waters

Members (up to \$100)

Nicole Adkins
Robert & Kathryn Allen
Suzanne Anderson
Stan and Faye Armstrong
Audrey T. Anderson
Dr. Alice Arnold
Michael and Susan Brown
Jarvis Campbell
Lyle and Pat Carlson
Ruth Ann Carson
James and Susan Chatham
Hal and Sandra Cohoon
Drs. Carol and William Collins
Michael Crane
Roland Crane
George Crocker
Drs. Barbara DaSilva-Tillmann
and Hans Tillmann
Beverly Davis

Jenny Dempsey
Kathryn Fenich
Elaine Yontz and Jack Fisher
Mary Jane Gaddis
Tony and Rebecca Godwin
Stephen and Nancy Gray
Kathy B. Heer
Cinda Hill
James and Deidra Hill
Jacqueline Hutcherson
James and Maggie Keehner
Drs. Warren and Cheryl Knudson
Barbara L. Lawrence
Biff Matthews
Lawrence McAvoy
Tweetie Mills
Lucy Montaquila
Brad Morenz and
Jennifer Hammond-Moranz

Larry and Beth Moye
Donald Parkerson
Lucia Peel
Ron Pledger
Ann Ritter
Elizabeth Robinson
Jewelle Rogers
Dixon and Kathryn Sauls
Alan and Ann Schreier
Joe Sevic
Mary Shore
Kai Slusser
Lillian Stover
Shirley Tacker
Melba Tripp
Peggy Valentini
Jennifer Watson
Dr. James Westmoreland
Cyndy Wilson

Production Spotlight



Nolan O'Dell is an award-winning designer of scenery for plays, musicals, and opera. For over twenty years he has served as a Resident Designer for Porthouse Theatre, a professional summer theatre located south of Cleveland, Ohio, in the Cuyahoga Valley National Park. As a scenic artist and props artisan Nolan has worked on Broadway productions including *Beauty and the Beast*, *The Lion King*, and *Titanic*, as well as Universal Studios Florida attractions including the *Cat and the Hat* Ride and *Twister* attraction. Most recently Nolan was the resident scenographer and technical theatre teacher at Douglas Anderson School of the Arts, a Grammy Award-winning performing arts high school in Jacksonville, Florida. He holds an MFA in Scenic Design from the University of Wisconsin-Madison and a BFA in Technical Theatre-Design and Production from Kent State University.

Thank you to all the SoTD Faculty & Staff

Jayme K. Host, Director, Dance
Lisa Bodollo, Theatre Education, Acting
Jill Matarelli Carlson, Theatre
John Carlson, Theatre
Patch Clark, Theatre for Youth, Theatre Ed.
Bryan Conger, Theatre
Teal Darkenwald, Dance
John Dixon, Dance
Jessica Doyle-Mekkes, Musical Theatre
Gabriela Estrada, Dance
Greg Funaro, Acting
Tommi Overcash Galaska, Dance
Ilana Giardina, Dance
Amanda K. Hudson, Admin. Support
Elana Kepner, Acting
Jacob Kerzner, Musical Theatre

Dirk Lumbard, Dance
Genevieve McCormick, Production Specialist
Jen-Scott Mobley, Theatre
Nolan O'Dell, Design & Production
Jeni L. Parker, Design & Production
Reid Parker, Design & Production
Kathleen Pierson, Performing Artist
Chad Rasor, Production Specialist
Kelly Reddick, Academic Advisor
Courtney Rasor, Stage Management
Michael Shoaf, Design & Production
Jonny Sitton, Performing Artist
Stephanie Slusser, Admin. Support
Delta Childers-Smith, Design & Production
Michael Tahaney, Musical Theatre
Jessica Teague, Dance

Help bring back Summer Theatre

The first East Carolina Summer Theatre opened in 1964 with six full-scale musicals, which were rehearsed and performed in an eight-week period. Well known Broadway hits *West Side Story*, *My Fair Lady*, and *Li'l Abner*, were some of the shows that kicked off what would become a beloved summer tradition at ECU and in Greenville. For nearly 50 years talented young performers took the stage with seasoned professionals to entertain audiences who were transported to another time and place, if only for a few hours.

Now it is time to prepare the front of house, light the stage, block the scenes, build the costumes, rehearse, and once again welcome back patrons!

We need your help to make this happen in summer 2022. Please support ECU's Summer Theatre program with a gift by returning the form below or visiting give.ecu.edu/SummerTheatreCampaign

DONOR INFORMATION

Name _____

Street address _____

City/State/Zip _____

Email _____

Phone _____

PAYMENT INFORMATION

DONATION AMOUNT: \$ _____

PAYMENT TYPE

☐ CREDIT/DEBIT
(Visa, Mastercard)

☐ CHECK # _____
(Make checks payable to School of Theatre and Dance)

CREDIT CARD PAYMENT

Card Number: _____ Exp: _____

Signature/Date: _____

Your signature authorizes ECU to process payment.

Campaign AAG110

RETURN COMPLETED FORM AND PAYMENT TO:

School of Theatre and Dance
Mail Stop 553
East Carolina University
Greenville, NC 27858



We can't wait to showcase emerging talent with working professionals
and bring theatrical favorites back to Messick Theatre Arts Center!

Photos, top to bottom: *Grease* (1982), *Kiss Me Kate* (1990), *Guys and Dolls* (2006), *West Side Story* (2007), *Big River* (2009)

COMING SOON

Dance @ Wright



October 23 | 2:00 p.m. | 7:30 p.m.
October 24 | 2:00 p.m.
 Wright Auditorium

Tickets:

\$15 | \$12 seniors/children/ECU faculty & staff | \$10 ECU students
252-328-6829 | theatredance.ecu.edu

ADA Accommodation: 252-737-1018 | ada-coordinator@ecu.edu



Nov. 17-21

ADA Accommodation:
 252-737-1018 • ada-coordinator@ecu.edu



Book by

Roger O. HIRSON

Music & Lyrics by

Stephen SCHWARTZ

Feb. 23-27

ADA Accommodation:
 252-737-1018 • ada-coordinator@ecu.edu



March 23-27

ADA Accommodation:
 252-737-1018 • ada-coordinator@ecu.edu



April 20-24

ADA Accommodation:
 252-737-1018 • ada-coordinator@ecu.edu

